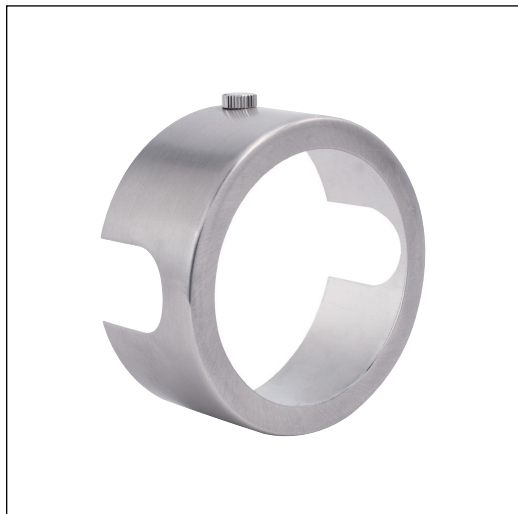


Sportster Louver Lens Holder

HEADS—LINE VOLTAGE



DESCRIPTION

Secures to front of line-voltage Sportster head and holds up to two lenses or louvers (sold separately).

SYSTEM

Available for T-trak™ only.

COLOR

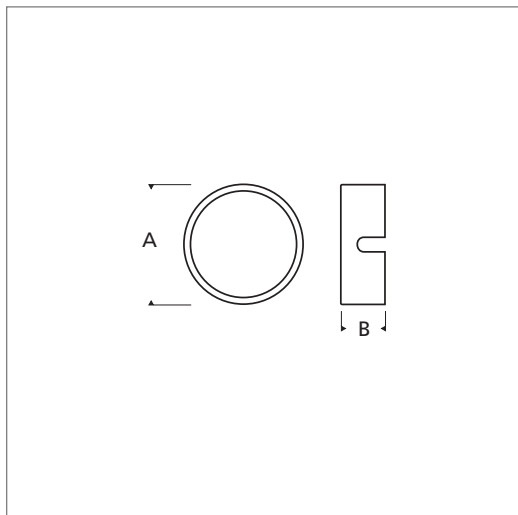
None

FINISH

Satin nickel

WEIGHT

0.10-0.20 lb./0.05-0.09 kg.



Dimensions for Louver Lens Holder

	A	B
PAR16	2.4" (60 mm)	1.5" (38 mm)
PAR20	2.9" (73 mm)	1.5" (38 mm)
PAR30	4.1" (105 mm)	1.5" (38 mm)
PAR38	5.1" (130 mm)	1.8" (44 mm)

ORDERING INFO:

700SLLH	TYPE	FINISH
16	PAR16	S SATIN NICKEL
20	PAR20	
30	PAR30	
38	PAR38	

700SLLH _____

FIXTURE TYPE: _____

JOB NAME: _____

tt_acc_sptster_lvr_spec.pdf

October 2004



7401 North Hamlin T 847.410.4400
Skokie, Illinois 60076 F 847.410.4500

www.techlighting.com



Specifications subject to change without notice.